

# Patient Testing Supplies



Contact Sales Support at 800.655.1133 to order supplies  
 Outside U.S.: Please contact your local MGC Diagnostics distributor for support

MGC Diagnostics supplies are the *only* recommended supplies for use with MGC Diagnostics equipment to achieve accurate, validated test results that meet ATS and ERS standards.

## UNIVERSAL TESTING SUPPLIES

FLOW SENSOR



preVent® flow sensor  
 PN: 758100-004  
 qty: 24 per box

NOSE CLIPS



Nose Clip  
**DISPOSABLE**,  
*clear: extra padded poly*  
 PN: 536007-003  
 qty: 100 per pack



Nose Clip  
**DISPOSABLE**, *white: no pad*  
 PN: 536007-001  
 qty: 100 per pack

NOSE CLIPS



Nose Clip, Parallel  
**DISPOSABLE**  
 PN: 536018-001  
 qty: 100 per pack



Nose Clip, Parallel-R  
 PN: 536019-001  
 qty: 10 per pack  
*each reusable clip comes with  
 10 pairs of replacement pads*



Replacement Pads  
*for Parallel-R*  
 PN: 536020-001  
 qty: 100 pads (50 pairs)

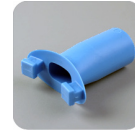
MOUTHPIECES



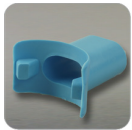
Mouthpiece  
 Adult Medium, **DISPOSABLE**  
*use with preVent flow sensor OR  
 preVent or preVent II filter*  
 PN: 536006-004  
 qty: 100 per pack



Mouthpiece, Adult Medium  
*General purpose, use with  
 preVent flow sensor*  
 PN: 758300-001  
 qty: 50 per pack



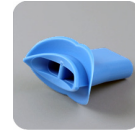
Mouthpiece, Adult Medium  
*use with preVent flow sensor OR  
 preVent II filter*  
 PN: 536101-002  
 qty: 10 per pack



Mouthpiece, Adult Large  
*use with preVent flow sensor*  
 PN: 536006-001  
 qty: 10 per pack



Mouthpiece, Adult Small  
*use with preVent flow sensor*  
 PN: 536006-003  
 qty: 10 per pack



Mouthpiece, Pediatric  
*use with pediatric adapter  
 and rubber coupler*  
 PN: 536006-002  
 qty: 10 per pack

OTHER



preVent® Handle  
 PN: 543370-001  
 qty: 1 each



Pediatric Adapter  
*use with pediatric mouthpiece  
 and rubber coupler*  
 PN: 535082-001  
 qty: 1 each



Rubber Coupler  
*use for syringe calibration of  
 preVent flow sensor*  
 PN: 536003-001  
 qty: 1 each



Rubber Coupler  
*use for syringe calibration of  
 preVent filter*  
 PN: 536170-001  
 qty: 1 each

## PULMONARY TESTING SUPPLIES

KITS



Kit 1\* - recommended  
 preVent II™ filter (536713-002)  
 & Nose Clip (536007-003)  
 PN: 536719-001  
 qty: 100 per box



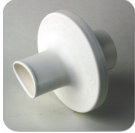







Kit 2\* - recommended  
 preVent II™ filter (536713-002), Nose Clip  
 (536007-003) & Mouthpiece (536006-004)  
 PN: 536723-001  
 qty: 100 per box

\* Filter from kit can be used with Resmon™ PRO FULL FOT system. Requires FOT Adapter (PN: 543687-001).






### III PULMONARY TESTING SUPPLIES, [ CONT'D ]

FILTERS		<p><b>preVent II™ filter*</b>  <b>General Use</b>  <i>Comfort fit oval mouthpiece with lip grip</i>                      PN: 536713-002                      qty: 100 per box</p>		<p><b>preVent II™ filter*</b>  <b>Pediatric</b>  <i>Comfort fit oval mouthpiece</i>                      PN: 536713-005                      qty: 100 per box</p>		<p><b>preVent II™ filter FOT</b>  <i>Comfort fit oval mouthpiece with lip grip</i>                      PN: 536713-004                      qty: 100 per box</p>
		<p><b>preVent® filter*</b>  <b>General Use</b>  <i>round mouthpiece design</i>                      PN: 536713-001                      qty: 100 per box</p>	<p><i>* Filter can be used with Resmon™ PRO FULL FOT system. Requires FOT Adapter (PN: 543687-001).</i></p>			

OTHER		<p><b>BreathPath™</b>  <b>patient circuit</b>                      PN: 758200-001                      qty: 12 per box</p>		<p><b>GC Column</b>                      PN: 536009-001                      qty: 1 each</p>		<p><b>preVent Retainer</b>                      PN: 155203-001                      qty: 1 each</p>		<p><b>FOT Adapter</b>                      PN: 543687-001                      qty: 1 each</p>
-------	---	--	---	--	---	---	---	--

### III GAS EXCHANGE TESTING SUPPLIES

FLOW SENSORS		<p><b>DirectConnect™</b>  <b>metabolic flow sensor</b>  <i>keyed</i>                      PN: 750066-003                      qty: 24 per box</p>		<p><b>DirectConnect™</b>  <b>metabolic flow sensor</b>  <i>non-keyed</i>                      PN: 750050-003                      qty: 24 per box</p>	MOUTHPIECE		<p><b>Mouthpiece</b>  <b>Adult Medium</b> <i>with saliva trap</i>                      PN: 758301-001                      qty: 50 per pack</p>
--------------	--	---	--	---	------------	--	---

FACE MASKS		<p><b>preVent® face mask</b>  <i>x-small</i>                      PN: 670009-005                      qty: 12 per pack</p>		<p><b>preVent® face mask</b>  <i>small</i>                      PN: 670009-001                      qty: 12 per pack</p>		<p><b>preVent® face mask</b>  <i>medium</i>                      PN: 670009-002                      qty: 24 per pack</p>
		<p><b>preVent® face mask</b>  <i>large</i>                      PN: 670009-003                      qty: 12 per pack</p>		<p><b>preVent® face mask</b>  <i>assorted: 6-S, 12-M, 6-L</i>                      PN: 670009-004                      qty: 24 per pack</p>		<p><b>V2 Mask Kit</b>  <i>assorted sizes available per component</i>                      PN: 536801-XXX**                      qty: 1 each</p>

OTHER		<p><b>DirectConnect Adapter</b>  <i>use with face mask and calibration syringe</i>                      PN: 701240-001                      qty: 1 each</p>		<p><b>Umbilical Adapter</b>  <i>use with DirectConnect metabolic flow sensor (3 prong)</i>                      PN: 701067-001                      qty: 1 each</p>		<p><b>Umbilical Adapter</b>  <i>use with DirectConnect metabolic flow sensor (4 prong, for use on Ultima Series PFX system)</i>                      PN: 701067-002                      qty: 1 each</p>		<p><b>Coupler</b>  <i>use with preVent® face mask</i>                      PN: 670010-003                      qty: 4 per pack</p>
-------	---	---	---	---	---	--	---	--

\*\* Individual V2 Mask components are also available. Contact Sales Support to order specific sizes and individual components.

MGC DIAGNOSTICS CORPORATION, through its subsidiary Medical Graphics Corporation  
 350 Oak Grove Parkway St. Paul, Minnesota USA 55127-8599

© 2017 MGC Diagnostics Corporation or one of its affiliates. All rights reserved.

All specifications subject to change without notice. Products may vary from those illustrated.

MGC Diagnostics and its affiliates are equal opportunity/affirmative action employers committed to cultural diversity in the workforce.

Part# 060134-001 RevG